



YOUR WATERSHED... YOUR LIFE.

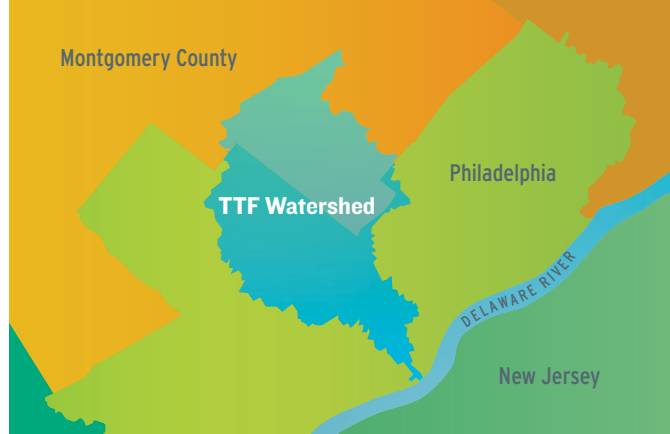
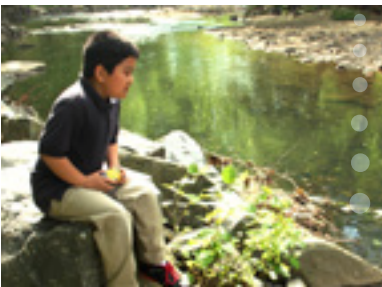


How TTF began.

In 2000, the Philadelphia Water Department and partners launched TTF as a groundbreaking effort to bring diverse stakeholders together to produce a healthier watershed. Incorporating as a non-profit organization in 2005, we hired our first full-time Executive Director in 2007. We celebrated our first Watershed Milestones Awards Ceremony & Reception in 2012. Our full-time staff of six includes Philadelphia and Upstream teams. We are supported by our municipal partners, grants from foundations and government agencies, and corporate and individual donations.

Here at TTF, we're all about connecting people to their creeks...

Because our mission is to improve the health of our watershed by engaging our communities in education, stewardship, restoration, and advocacy.



THE TOOKANY/TACONY-FRANKFORD WATERSHED INCLUDES:

Our Montgomery County Communities

Abington
Cheltenham
Jenkintown
Rockledge
Springfield

Our Philadelphia Neighborhoods

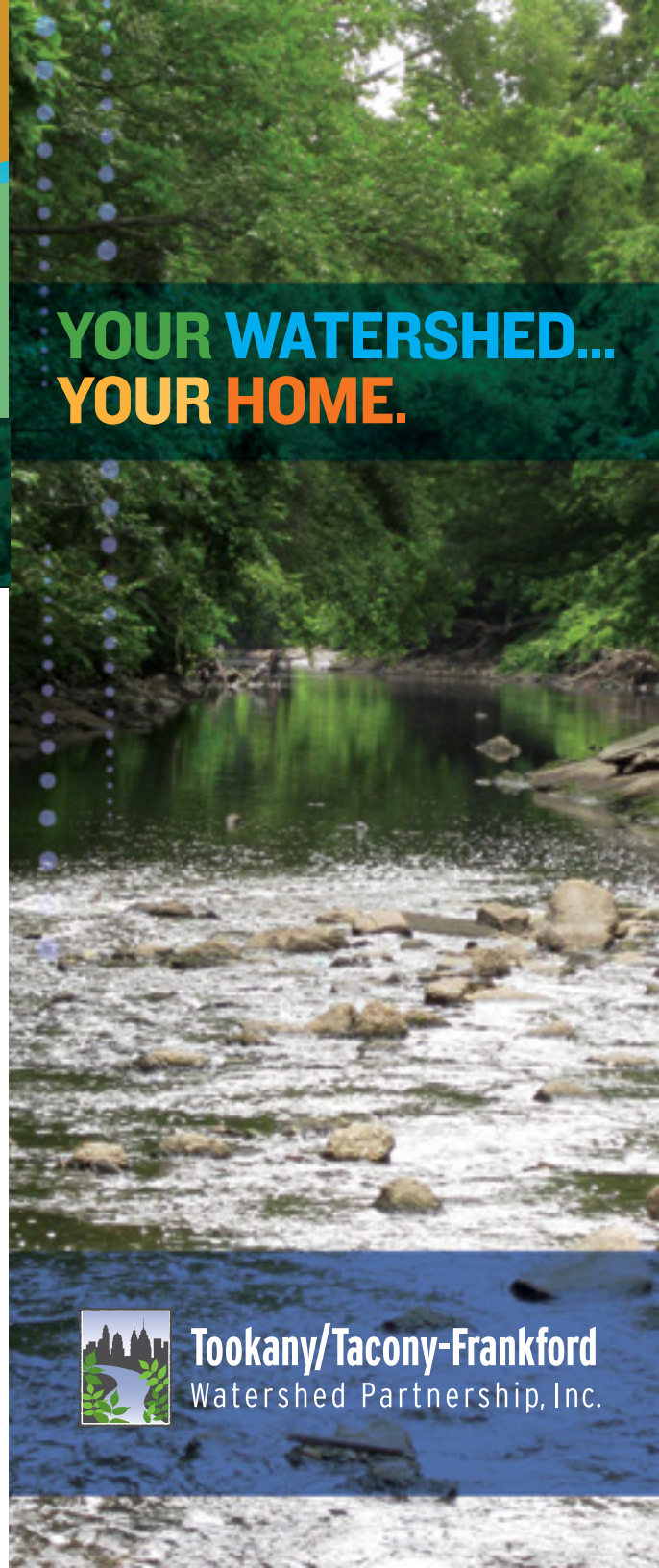
Bridesburg
Cedarbrook
East Oak Lane
East Mt. Airy
Feltonville
Fern Rock

Fox Chase
Frankford
Germantown
Harrowgate
Hunting Park
Juniata Park
Lawncrest
Logan
Nicetown
Northwood
Ogontz
Olney
Oxford Circle
Port Richmond
West Oak Lane



Tookany/Tacony-Frankford
Watershed Partnership, Inc.

4500 Worth Street • Philadelphia PA 19124
215.744.1853 | www.ttfwatershed.org | info@ttfwatershed.org



YOUR WATERSHED... YOUR HOME.



Tookany/Tacony-Frankford
Watershed Partnership, Inc.



WHAT IS A WATERSHED?

A watershed is all of the land that drains into a body of water.

The Tookany/Tacony-Frankford Watershed is part of the Delaware River Watershed, which provides drinking water for 15 million people!

The Tookany/Tacony-Frankford Watershed

Our 30 square mile watershed begins in Montgomery County and has five main tributaries: Baeder, Jenkintown, and Rock Creek as well as Leeches and Mill Run. These tributaries join Tookany Creek, which becomes Tacony Creek as it flows into Philadelphia at Cheltenham Avenue. At the Juniata Golf Course, where the Wingohocking Creek once joined the Tacony, the name finally changes to the Frankford. The Frankford Creek flows into the Delaware River south of the Betsy Ross Bridge. That's why we call it the TTF!

HELP US KEEP OUR WATERSHED HEALTHY... NATURALLY.

What is the #1 Source of Watershed Pollution?

Rain carries sediment, trash, pet waste, chemicals, and oil and gas from cars over land and into storm drains, dumping them into our creeks, streams, and rivers. This runoff harms everything from our sources of drinking water to plants and wildlife.

Why Plant Buffers?

Buffers are areas of land next to streams planted with native trees, shrubs, and grasses which filter and slow runoff, and provide shade and wildlife habitat. We have planted over 60,000 square feet of buffer with more than 2,400 trees with municipal and school partners as well as homeowners in Abington, Cheltenham, and Jenkintown.

What's Green Stormwater Infrastructure (GSI)?

GSI uses plants and soil so that rain soaks into the ground and is cleaned where it falls. We're proud to be a Philadelphia Water Department partner, supporting the Green City Clean Waters 25 year plan to improve water quality through GSI. Visit our rain gardens in Germantown and Olney as well as in our upstream communities.

See for Yourself.

Stop by our project sites to learn about stormwater management, native plants, and creek health. These outdoor classrooms for people of all ages have been recognized by The Audubon Society, National Wildlife Federation, and Pennsylvania Horticultural Society. See a map and more on our website.

WE'RE IMPROVING OUR CREEKS – AND HAVING FUN!

Are you a caring neighbor, community organization, school, church, elected official or business?

Across our watershed - from the headwaters in our upstream communities to our downstream neighborhoods - we invite you to learn about clean water and how we can all make a difference in our own backyards, parks, and communities. Host a workshop or volunteer with us!

Discover Tacony Creek Park.

In partnership with the Philadelphia Parks & Recreation and Water departments, we invite neighbors to discover this historic urban watershed park and creek through programs as well as engagement and improvement efforts. Activities include bird, nature, and history walks as well as annual block parties.

Workshops and Hands-on Projects.

Our **Watershed Heroes** workshop provides an overview of water issues and how we can all improve our waterways. We offer **Rain Barrel** and **Rain Garden** workshops too. We're always planning new projects for the fall and spring planting seasons.

Streamkeepers = Citizen Scientists

We train and support a team of volunteer citizen scientists! Each month, these amazing volunteers visit and record information about the health of a local creek. Streamkeepers are advocates for clean water in their communities.

Storm Drain Marking plus Stream & Park Cleanups

It isn't just litter that washes into our creeks. Everything on the street - from pet waste to motor oil - enters storm drains and our waterways. Help by canvassing and attaching storm drain markers that warn: Keep It Clean! Drains to the Creek! Organize a storm drain marking or cleanup on your block or at your park to keep litter from entering the stream.

Buffers, Rain Gardens & Native Plants

Join with us to plant buffers and rain gardens of native plants. Learn how you can take these steps at home or with your neighbors.

...Rain Barrels too

Looking for a rain barrel? Rain barrels capture rain from rooftops so that it can be released in drier weather, helping prevent sewer systems from overflowing and polluting our waterways. We provide information and sell rain barrels. If you live in Philadelphia, we can tell you how to get one for free!

Making a Difference Where it Counts: Upstream

We work with partners from member municipalities to school districts and non-profit institutions to implement stream restoration and GSI projects. We encourage and support our upstream municipalities to implement clean water policies and undertake watershed restoration with the support of the William Penn Foundation's Delaware River Watershed Initiative.

PROTECT YOUR WATERSHED. BECOME A FRIEND OF TTF TODAY!

We count on donations and hands-on help from people like you who share our mission and passion. Contact us to learn more about how you can become a watershed hero at home or in your community!

